



NBR1 mouse Monoclonal Antibody(7C3)

Catalog No	YP-Ab-04870
Isotype	IgG
Reactivity	Human;Mouse;Rat
Applications	IF;IHC
Gene Name	NBR1 1A13B KIAA0049 M17S2 MIG19
Protein Name	Next to BRCA1 gene 1 protein (Cell migration-inducing gene 19 protein) (Membrane component chromosome 17 surface marker 2) (Neighbor of BRCA1 gene 1 protein) (Protein 1A1-3B)
Immunogen	Recombinant Protein of NBR1
Specificity	The antibody detects endogenous NBR1 protein
Formulation	Liquid in PBS containing 50% glycerol, 0.5% BSA and 0.02% sodium azide.
Source	Monoclonal, Mouse
Purification	The antibody was affinity-purified from mouse antiserum by affinity-chromatography using epitope-specific immunogen.
Dilution	IF: 1:50-200 IHC-p 1:50-300
Concentration	1 mg/ml
Purity	≥90%
Storage Stability	-20°C/1 year
Synonyms	Next to BRCA1 gene 1 protein (Cell migration-inducing gene 19 protein) (Membrane component chromosome 17 surface marker 2) (Neighbor of BRCA1 gene 1 protein) (Protein 1A1-3B)
Observed Band	120kD
Cell Pathway	Cytoplasm . Cytoplasmic vesicle, autophagosome . Lysosome . Cytoplasm, myofibril, sarcomere, M line . In cardiac muscles localizes to the sarcomeric M line (By similarity). Is targeted to lysosomes for degradation (PubMed:19250911). .
Tissue Specificity	Bone marrow,Lymph,Ovary,Testis,
Function	caution:Was originally (PubMed:8069304) thought to be the ovarian carcinoma antigen CA125.,domain:The OPR domain mediates interaction with SQSTM1.,similarity:Contains 1 OPR domain.,similarity:Contains 1 UBA domain.,similarity:Contains 1 ZZ-type zinc finger.,subunit:Homooligomer and heterooligomer. Interacts with SQSTM1, titin/TTN and RNF29.,
Background	The protein encoded by this gene was originally identified as an ovarian tumor antigen monitored in ovarian cancer. The encoded protein contains a B-box/coiled-coil motif, which is present in many genes with transformation potential. It functions as a specific autophagy receptor for the selective autophagic degradation of peroxisomes by forming intracellular inclusions with ubiquitylated autophagic substrates. This gene is located on a region of chromosome 17q21.1

that is in close proximity to the BRCA1 tumor suppressor gene. Alternative splicing of this gene results in multiple transcript variants. [provided by RefSeq, Apr 2014],

matters needing attention

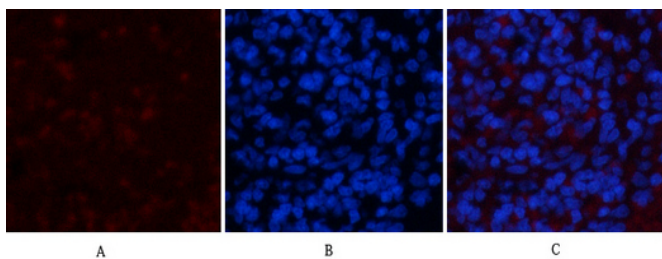
Avoid repeated freezing and thawing!

Usage suggestions

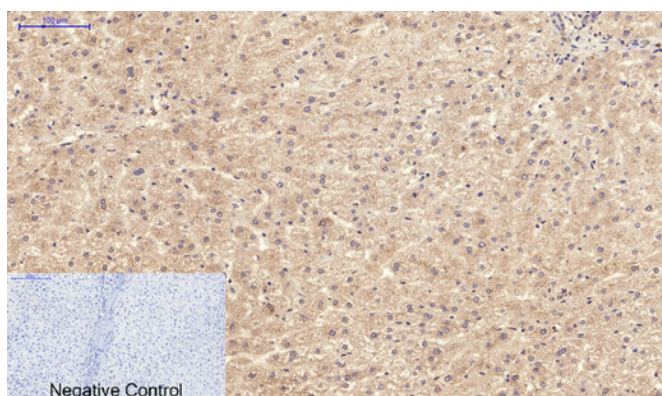
This product can be used in immunological reaction related experiments. For more information, please consult technical personnel.



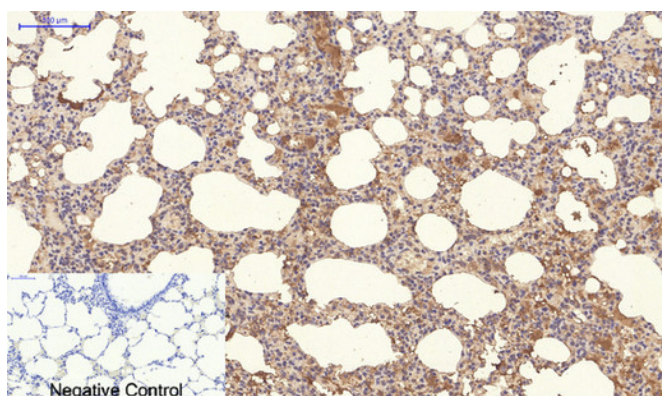
Products Images



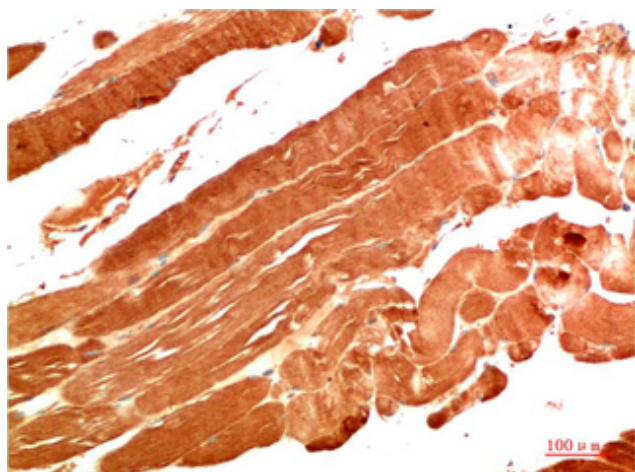
Immunofluorescence analysis of rat-spleen tissue. 1, NBR1 Mouse Monoclonal Antibody(7C3)(red) was diluted at 1:200(4°C, overnight). 2, Cy3 labeled Secondary antibody was diluted at 1:300(room temperature, 50min). 3, Picture B: DAPI(blue) 10min. Picture A: Target. Picture B: DAPI. Picture C: merge of A+B



Immunohistochemical analysis of paraffin-embedded Human-liver tissue. 1, NBR1 Mouse Monoclonal Antibody(7C3) was diluted at 1:200(4°C, overnight). 2, Sodium citrate pH 6.0 was used for antibody retrieval(>98°C, 20min). 3, Secondary antibody was diluted at 1:200(room temperature, 30min). Negative control was used by secondary antibody only.



Immunohistochemical analysis of paraffin-embedded Rat-lung tissue. 1, NBR1 Mouse Monoclonal Antibody(7C3) was diluted at 1:200(4°C, overnight). 2, Sodium citrate pH 6.0 was used for antibody retrieval(>98°C, 20min). 3, Secondary antibody was diluted at 1:200(room temperature, 30min). Negative control was used by secondary antibody only.



Immunohistochemical analysis of paraffin-embedded Human Skeletal Muscle Tissue using NBR1 Mouse mAb diluted at 1:200.